

### PRECISION TOOLMAKERS VISE

- Features:
- With V-grooved jaw
  - Hardened and ground HRC58-62
  - Square and parallel within 0.0002"
  - One-piece body construction.



0235-0311

Item	Jaw Width	Jaw Opening	Jaw Depth	Vise Length	Price
0235-0310	2-3/8"	3-3/8"	1-1/4"	7-1/8"	\$126.00/PC
0235-0311	3-1/2"	4-3/4"	1-9/16"	10"	\$205.00/PC
0235-0312	4"	4-3/4"	1-3/4"	10-1/4"	\$266.00/PC

### PRECISION SCREWLESS VISE

- Features:
- Hardened and stabilized
  - Precision ground to a mirror finish
  - Simple operation and extremely versatile
  - Squareness and parallelism are approx. ±0.0002" on critical sides

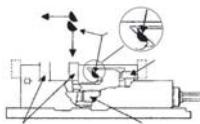


0235-0302

Item	Size	Total Length	Total Ht.	Jaw Opening	Price
0235-0302	2"	5.51"	1.96"	2.56"	\$86.00/PC
0235-0303	3"	7.48"	2.75"	3.93"	\$126.00/PC
0235-0304	4"	9.64"	3.54"	4.92"	\$238.00/PC

### SUPER ANGLE LOCK PRECISION SWIVEL BASE MILLING MACHINE VISE

- Features:
- With swivel base
  - Removable hinged handle for fast locking
  - Provides better clamping pressure



FA20-4204

Item	Jaw Width	Jaw Opening	Jaw Depth	Length	Width	Height	Weight	Price
FA20-4204	4"	5.511"	1.259"	13.582"	8.858"	4.724"	39lbs	\$286.00/PC
FA20-4206	6"	6.299"	1.771"	17.322"	10.944"	6.023"	83lbs	\$380.00/PC

### SUPER-LOCK PRECISION CNC MACHINE VISE

- Features:
- Features a thrust bearing that increases clamping power by 80%.
  - Can be mounted upright or sideways
  - Excellent to use when you have multiple vise setups.



Item	Jaw Width	Jaw Opening	Jaw Depth	Length	Width	Height	Weight	Price
FA23-5206	6"	7.480"	1.771"	17.322"	6.338"	4.803"	63lbs	\$382.00/PC

Can not guarantee the exact location of Keyway Slot. Need Machining the Keyway if they used in pairs.

### MINI PRECISION TOOLMAKERS INSERT VISE

- Features:
- Ideal for holding small parts, can be used either separately or held inside another bigger vise
  - Approximate dimensions:  
Jaw width: 1.023"  
Jaw opening: 0.866"  
Weight: 1.10lbs.  
Jaw depth: 0.360"  
Length: 2.574"



Item # GA41-0050 \$60.00/PC

### PRECISION SCREWLESS SINE VISE

- Features:
- Provides a quick and accurate means of holding a workpiece at an angle for machining, drilling and grinding
  - Accuracy is further enhanced by the fact that the center distance between the holes is held within 0.0002"
  - Small angles can be set easily and accurately by using standard gage block sets because of the built in 0.200" minute steps
  - Made of hardened solid steel
  - All surfaces hardened and ground.
  - Adjusts: 0-45°

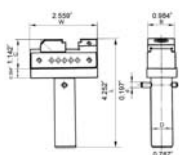


BA66-0420

Item	Dimension		Center Distance of Roll	Sq. & Parallel	Jaw Capacity	Jaw Height	Weight	Price
	L x W x H							
BA66-0420	7-1/2"	x3"x3-5/8"	5.000" within 0.0002"	0.0002"	4-3/4"	1-5/16"	17lbs	\$195.00/PC
BA66-0425	11"x4"	x4-5/8"	10.000" within 0.0002"	0.0003"	7"	1-7/16"	39lbs	\$455.00/PC

### MICRODE EDM ELECTRODE HOLDER VISE STANDARD ELECTRODE VISE

- Features:
- Precision ground and hardened to HRC58-62
  - Parallelism: 0.005mm/100mm
  - Squareness: 0.005mm
  - 20mm diameter shank
  - 50mm from back of cross pin to shank end
  - Hardened and ground locating pin
  - Jaw opening: 20mm
  - Jaw width: 25mm
  - Jaw height: 9.3mm



Item # GA10-3001 \$75.00/PC

### 6" DOUBLE LOCK ANGLE TIGHT PRECISION MACHINE VISE WITH 2 CLAMPING STATION

- Features:
- Spheroidal cast iron body
  - Jaw width: 6" (160mm)
  - Jaw opening: 3.937"
  - Jaw depth: 1.968"
  - Length: 24.094"
  - Width: 6.299"
  - Height: 5.118"
  - Weight: 99lbs

Item # FA42-1242

**\$860<sup>00</sup><sub>pc</sub>**



### PRECISION CNC MILLING VISE

- Features:
- Low profile pull-down jaws.
  - Forged steel body.
  - This design eliminates clamping deflection. It can be opened very wide and provides strong clamping power.
  - Ideal for all types of milling, grinding, drilling and tapping operations on vertical and horizontal CNC machining.
  - Produced of high quality steel, carburized to surface hardness: HRC58-62
  - High accuracy - all surfaces are hardened and precision ground square and parallel to an accuracy of 0.0012" jaws and 0.0008" base.

- Jaw width: 6"
- Jaw opening: 8"
- Jaw depth: 2"
- OAL: 16.8"

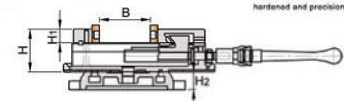
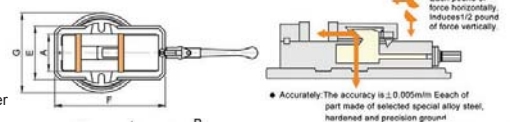
**\$950<sup>00</sup><sub>pc</sub>**

Item # 1202-1025



### 3" HEAVY DUTY PRECISION SUPER SWIVEL BASE MILLING MACHINE VISE

- Features:
- Precision ground to accuracy
  - With swivel base
  - Removable hinged handle for fast locking
  - Provides better clamping pressure
  - Especially suitable for CNC machining center with good stability and accuracy
  - The unique structure allows to clamp the work piece effectively.
  - Detachable crank to speed up the workpiece clamping.
  - Clamp mouth mat, slides screw the quenching process.
  - Two slide to the underside of the parallel degree of 0.005/100 mm.
  - Two clamp mouth to slide plane perpendicular to cushion for 0.015/100 mm.



- Jaw width: 3"
- Jaw opening: 2-61/64"
- Jaw Ht.: 63/64"

Item # FA20-4203

**\$258<sup>00</sup><sub>pc</sub>**

